



PARKS OFFICER – NATIVE VEGETATION MAINTENANCE

SOUTH WAIKATO DISTRICT COUNCIL

FEBRUARY 2025

VISION

A thriving community and robust economy that outpaces the rest of NZ

GOALS

- 1. More people own their own home than ever before*
- 2. More people participate in community activities and events than ever before*
- 3. No waste or rubbish leaves the District*
- 4. Our economy grows faster than anywhere else in the country*
- 5. All our young people are in education or employment*

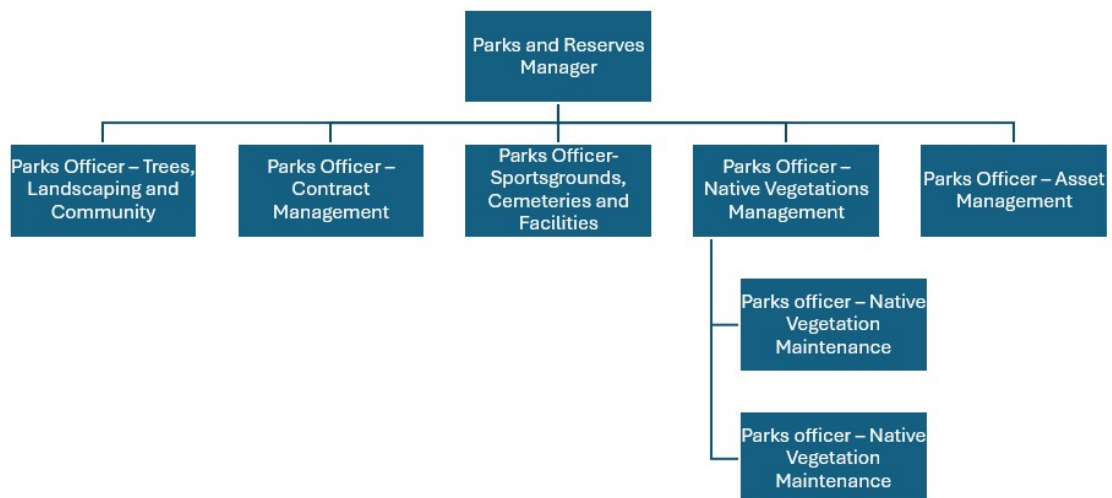
POSITION DESCRIPTION

Parks Officer – Native Vegetation Maintenance

To maintain native vegetation and wetlands within Council-owned or administered land, ensuring that designated areas are well-maintained, aesthetically appealing, and environmentally sustainable.

POSITION SIZE:	8
REPORTS TO:	Parks Officer – Native Vegetation Management
GROUP:	Parks and Reserves
POSITION APPROVAL:	Executive Manager – Delivery
NUMBER OF DIRECT REPORTS:	0
TENURE:	Full Time, Fixed-Term Contract (6 months)
FINANCIAL DELEGATION:	\$0

TEAM STRUCTURE



ACCOUNTABILITIES & OUTCOMES

OPERATIONS

Maintenance of the native vegetation and wetland areas meet the defined performance measures and expected levels of service, as directed by the Parks Officer – Native Vegetation Management.

The releasing of juvenile native species plantings is completed at required frequencies.

Wetland maintenance is completed to frequency schedule as provided in the Native Vegetation Performance Measures document.

Invasive weeds such as Broom, Blackberry, Willow and Cherry) are being controlled within native planting areas

PARKS, PROGRAMMES AND PROJECTS

Assistance is provided to complete the annual Parks and Reserves tree and shrub planting programme.

Assistance is provided to the wider Parks and Reserves team with operational projects or programmes as required.

ABOUT YOU

REQUIREMENTS

Competent level of digital literacy

Minimum of five years' relevant industry experience in vegetation maintenance.

Current valid Driver's Licence.

ABILITIES

- ✓ Maintain an understanding of local regulations, safety standards and environmental considerations.
- ✓ Demonstrate familiarity and knowledge of NZ native plant species, disease, pests, and industry maintenance and best practise.
- ✓ Ensure operations are implemented and evaluated in line with the Health and Safety at Work Act 2015.
- ✓ Demonstrate flexibility and willingness to commit to the delivery of results.
- ✓ Demonstrate an awareness of, and commitment to, the principles of Te Tiriti O Waitangi and how it relates in a Local Government environment.
- ✓ Embrace a culture of transformation and change.

BEHAVIORS



Signed: Dated:

NAME